

GREEN POWER KOHLER DIESEL MOTOR

3000 RPM

Typ GP 10 DE

Motor : 25LD 330/2

Generator set is with Lombardini diesel engine, electric output (with key and battery). Generator 400V 3-phase + N or 230V 1-phase - 50 Hz mounted on the bed frame.

Manual control panel, mounted on genset, with the following instruments: automatic switch and voltmeter (excluding 5 kVA current), 2 CEE sockets, key start and light.



Main use: single-family homes, camping, mountain slopes, restaurants, farms, small factories. Generator set at 3000rpm is special used for stand-by use, not continuous.

Technical features

- ▶ 4-stroke air-cooled diesel engine.
- ▶ Conical power take-off on the crankshaft.
- ▶ Anti-clockwise rotation.
- ▶ Direct injection.
- ▶ Forced lubrication with oil pump.
- ▶ Centrifugal mass governor.
- ▶ Built-in full-flow oil filter.
- ▶ Oil breathing blow-by with safety device.
- ▶ Automatic auxiliary fuel starting device.
- ▶ Self bleeding fuel system.
- ▶ Torque regulator.
- ▶ Automatic compression release.
- ▶ Die-cast aluminum crankcase with integrated cast iron cylinder liner.
- ▶ Aluminum alloy top cover.
- ▶ Built-in rigid feet.



ESP* Kva/KW:

Max effect STAND-BY (ESP) represents the maximum amount of current that a generator delivers. Normally used to provide backup power during a utility outage until power can be restored. An ESP rated generator that is limited to a 24-hour average cabin factor of 70%, unless otherwise specified by the manufacturer.

LTP** Kva/KW:

Available electrical load (at a variable load) for a maximum of 500 hours per year. No overload capacity is available.

Scope of delivery:

The engine and alternator are assembled with each other forming a rigid monoblock, the shafts are connected by a flexible disk connection. The monoblock is mounted on a steel base frame via silent blocks. The base frame is inclusive of one fuel tank. Starting is electric and it contains a battery.

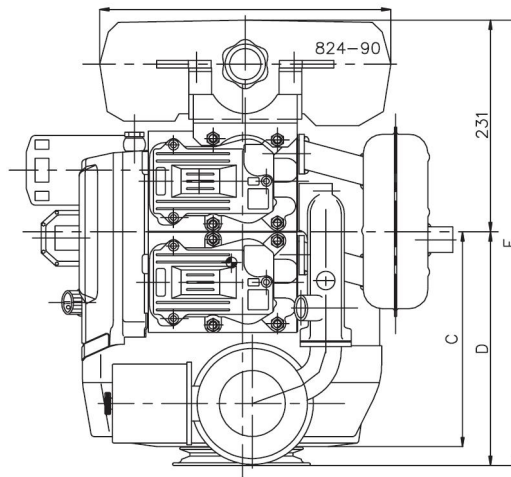
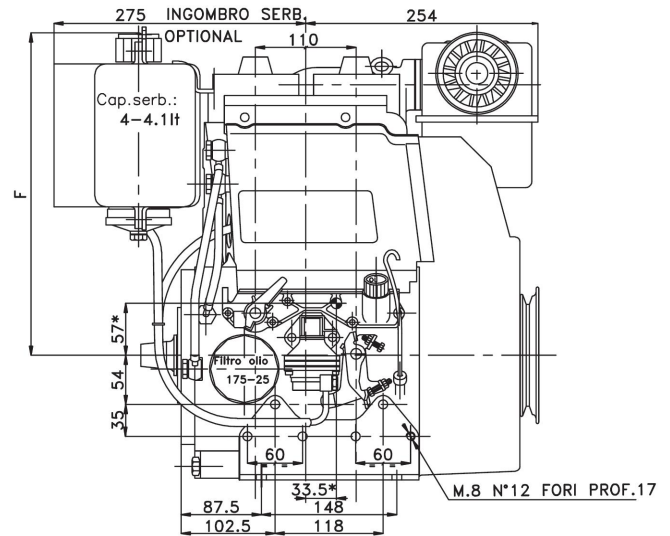
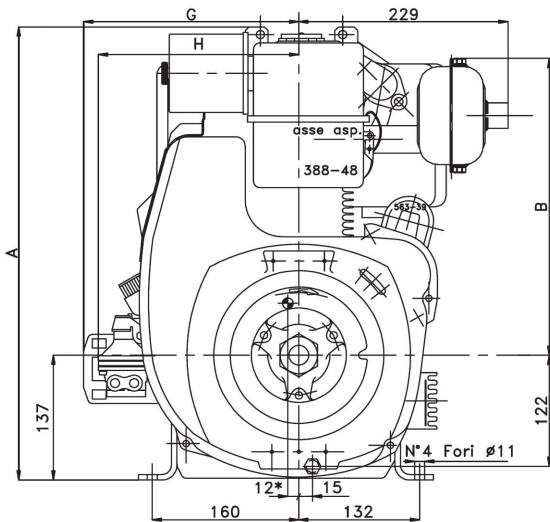
► Rating Was Table: KOHLER 25LD 330/2 Den Genset Motor. 50Hz

Engine type		25LD 330/2
RPM	rpm	3000
Frequency	Hz	50

Engine power

Power plant output continuous operation (LTP)	kVA kW	10 8
Power plant output STAND-BY (ESP)	kVA kW	11 8,8

Overall dimensions (mm):



Standard equipment

Electric start with 12V starter motor and generator
 Black color on sheet metal details
 Remote throttle control
 Oil bath air filter with pre-filter
 Internal oil filter with mesh
 Oil pressure monitor
 Combined manifold and exhaust silencer
 Motor feet
 Power take-off on the crankshaft
 Key switch panel
 Fuel lift pump
 Direction of rotation counterclockwise on the PTO side
 Fuel tank with filter
 Automatic additional fuel device
 Use, maintenance and spare parts booklet

Special accessories

PTO flywheel side
 (engines with electric start)
 PTO with flange and special shaft
 parallel crankshaft
 Internal dynamic balancer
 Oil bath air cleaner
 Electric start 12 V / 24 V
 Key switch panel
 Emergency stop through electro valve
 Accelerator and stop remote control
 Key start panel with shutdown device
 Fuel lift pump
 Oil the dipstick on the cylinder head
 Oil pressure switch
 Oil temperature switch
 Glow plugs on the intake manifold
 Recoil with denoising cover
 Grass protection for engine cooling

TECHNICAL DATA

Motor	
Engine Model	25LD 330/2
Number of cylinders	2
Cylinder volume cm ³	654
Drill mm	80
Beat mm	65
bicycle	Diesel 4 stroke
Compression ratio	19:1
Fuel tank capacity lit	4
Oil consumption kg/h	0,007
Oil capacity lit	1,8
Dry weight kg	60
Recommended battery V / Ah	12 / 55



Greenpower AB

Helsingborgsvägen Varalöv
 262 96 Ängelholm
 Tel: 0431-222 40
 Fax: 0431-222 70
 E-mail: info@greenpower.se
 web:www.greenpower.se